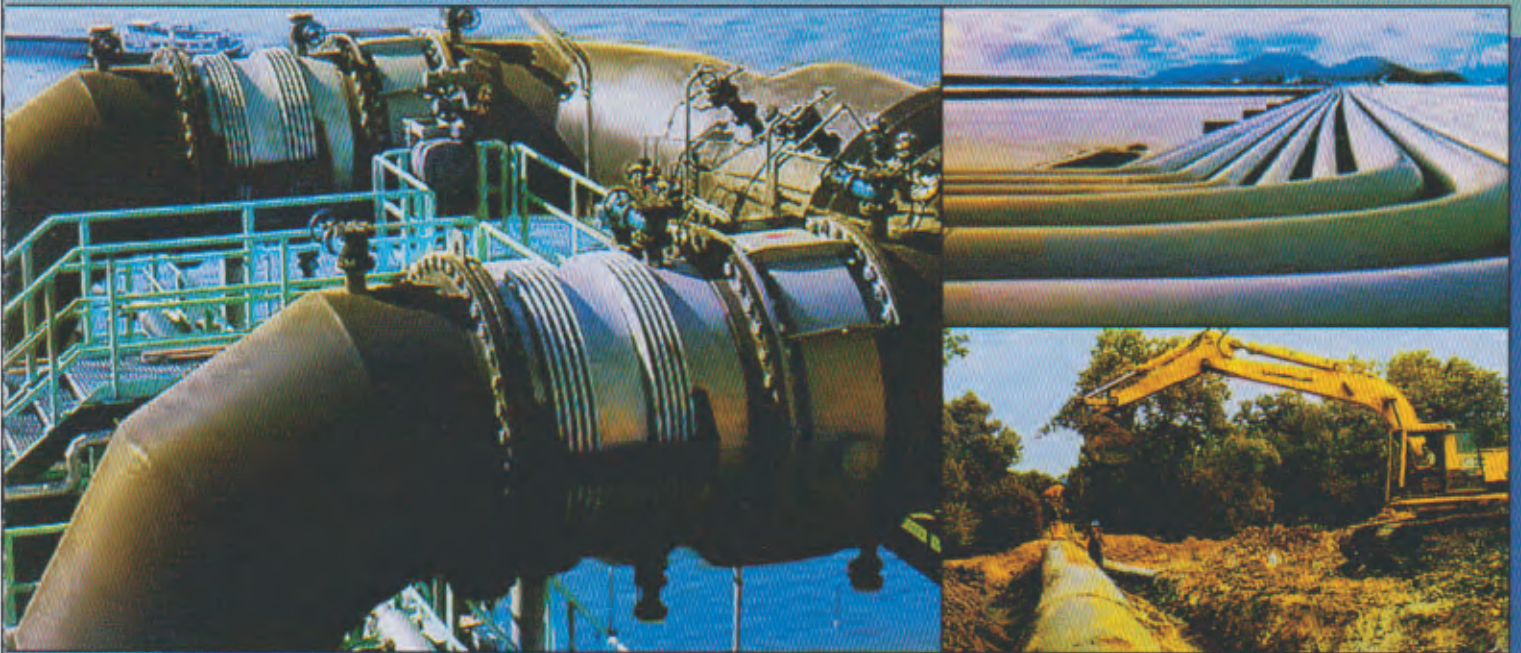




# MASPION

Quality is Our Priority



## PE PIPE AND FITTINGS POLYETHYLENE PIPING SYSTEM

FOR ALL - AROUND AND HIGH TECHNOLOGY APPLICATIONS



MASPION GROUP

Prestasi Indonesia

## Introduction

- Maspion Group now has entered into an era and offer a new system in piping technology in line with other advance nations that is PE pipe, fittings and system technology.

*Maspion Group telah memasuki era baru dengan menawarkan teknologi perpipaan yang terbuat dari Polyethylene (PE) lengkap dengan fitting serta sistem teknologinya.*

- Using high standard PE raw material readily compounded with stabilizer for potable water (black) and natural gas (yellow) applications.

*Menggunakan bahan PE bermutu tinggi yang telah diolah dengan stabiliser untuk saluran air (warna hitam) dan gas alam (warna kuning).*

- Manufactured and tested in accordance with standards SNI and ISO. Other standards are produced upon request.

*Diproduksi dan diuji sesuai dengan standar SNI dan ISO. Untuk standar lainnya dapat dibuat menurut kebutuhan.*

## Features

- High impact strength. *Tahan terhadap benturan.*
- Abrasion resistance. *Tahan terhadap abrasi.*
- Chemical resistance. *Tahan terhadap bahan kimia.*
- Flexible. *Lentur.*
- Fast and easy installation. *Cepat dan mudah pemasangannya.*
- High flow capacity. *Kemampuan alir tinggi.*
- Weathering resistance. *Tahan terhadap iklim dan cuaca.*
- Light weight. *Ringan.*

## Applications

- Water supply. *Distribusi air minum.*
- Gas Distributions. *Distribusi gas.*
- Industrial and chemical. *Industri kimia.*
- Sewerage. *Saluran limbah.*
- Submerge pipe line. *Jaringan pipa dasar laut.*
- Relining. *Penggantian pipa dengan memasukkan kedalam pipa lama.*
- Agriculture. *Pertanian.*



### PIPE IN STRAIGHT LENGTH

From 110 mm - 400 mm OD  
At 6.0 M or 12.0 M



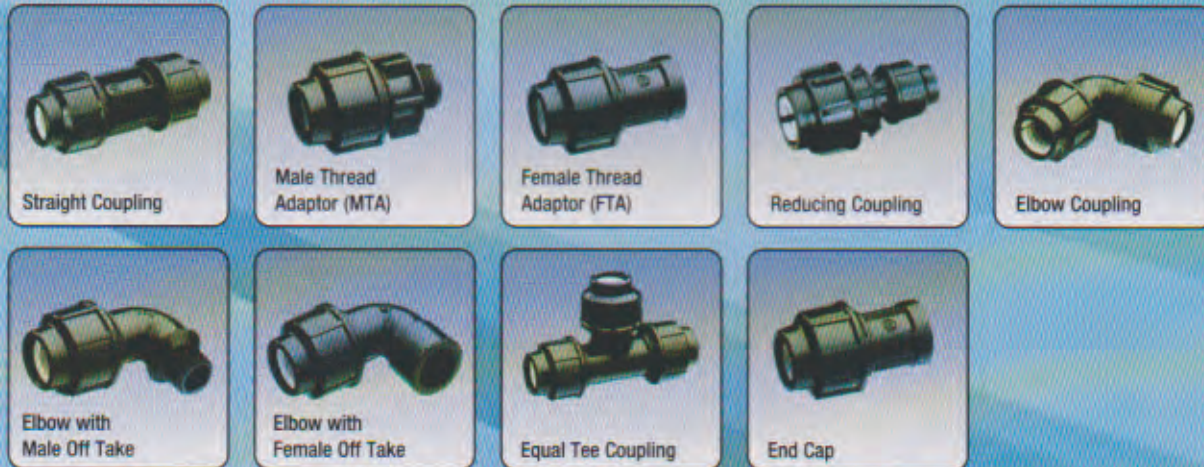
### PIPE IN ROLL

From 20 mm - 90 mm OD  
Between 50 M to 300 M

# Specification of Pipes Dimension as per ISO 4065, ISO 4437

PIPE OD (mm)	WATER						GAS	
	S - 2.5 (SDR 6)	S - 3.2 (SDR 7)	S - 4 (SDR 9)	S - 5 (SDR 11)	S - 8 (SDR 17)	S - 10 (SDR 21)	S - 5 (SDR 11)	S - 8 (SDR 17.6)
16	2.7	2.2	2.0	1.8	-	-	3.0	-
20	3.4	2.6	2.3	2.0	1.8	-	3.0	2.3
25	4.2	3.5	2.8	2.3	2.0	1.8	3.0	2.3
32	5.4	4.4	3.6	2.9	2.2	2.0	3.0	2.3
40	6.7	5.5	4.5	3.7	2.4	2.2	3.7	2.3
50	8.3	6.9	5.6	4.6	3.0	2.4	4.6	2.9
63	10.5	8.6	7.1	5.8	3.8	3.0	5.8	3.6
75	12.5	10.3	8.4	6.8	4.5	3.6	6.8	4.3
90	15.0	12.3	10.1	8.2	5.4	4.3	8.2	5.2
110	18.3	15.1	12.3	10.0	6.6	5.3	10.0	6.3
125	20.8	17.1	14.0	11.4	7.4	6.0	11.4	7.1
140	23.3	19.2	15.7	12.7	8.3	6.7	12.7	8.0
160	26.6	21.9	17.9	14.6	9.5	7.7	14.6	9.1
180	29.9	24.6	20.1	16.4	10.7	8.6	16.4	10.3
200	-	27.4	22.4	18.2	11.9	9.6	18.2	11.4
225	-	-	25.2	20.5	13.4	10.8	20.5	12.8
250	-	-	27.9	22.7	14.8	11.9	22.7	14.2
280	-	-	-	25.4	16.6	13.4	25.4	15.9
315	-	-	-	28.6	18.7	15.0	28.6	17.9
355	-	-	-	32.2	21.1	16.9	32.2	20.2
400	-	-	-	36.3	23.7	19.1	36.3	22.8
450	-	-	-	40.9	26.7	21.5	40.9	25.6
500	-	-	-	45.4	29.6	23.9	45.5	28.4
560	-	-	-	50.8	32.9	26.7	50.9	31.9
630	-	-	-	57.2	37.1	30.0	57.3	35.6
710	-	-	-	-	41.8	33.9	-	-
800	-	-	-	-	47.1	38.1	-	-
900	-	-	-	-	52.9	42.9	-	-
1000	-	-	-	-	58.8	47.7	-	-
1200	-	-	-	-	57.2	-	-	-

## Compression Fitting



## Specification of Compression Fitting

Straight Coupling	Male Thread Adaptor (MTA)	Female Thread Adaptor (FTA)	Reducing Coupling	Elbow Coupling	Elbow with Male Off Take
20	20 X 1/2"	20 X 1/2"	25 X 20	20	20 X 1/2"
25	25 X 3/4"	25 X 3/4"	32 X 20	25	25 X 3/4"
32	32 X 1"	32 X 1"	32 X 25	32	32 X 1"

Elbow with Female Off Take	Equal Tee Coupling	End Cap
20 X 1/2"	20 X 20 X 20	20
25 X 3/4"	25 X 25 X 25	25
32 X 1"	32 X 32 X 32	32

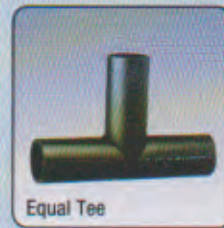
## Specification of Pipes Dimension SNI 06-4829-2005, ISO 4427

Nominal Outside Diameter $d_n$	Pipe Series <sup>1)</sup> (PE 80)				
	S-10	S-8	S-6.3	S-5	S-4
	Standard Dimension Ratio				
	SDR 21	SDR 17	SDR 13.6	SDR 11	SDR 9
	Nominal Pressure PN <sup>2)</sup> for $C_5 = 6.3$ MPa				
Nominal Wall Thickness, $e^3)$ mm					
16	-	-	-	(2.0)	2.3
20	-	(1.8)	(1.9)	(2.0)	2.3
25	-	(2.0)	(2.2)	2.3	2.8
32	-	(2.2)	2.4	2.9	3.6
40	-	(2.4)	3.0	3.7	4.5
50	-	3.0	3.7	4.6	5.6
63	-	3.8	4.7	5.8	7.1
75	-	4.5	5.5	6.8	8.4
90	4.3	5.4	6.6	8.2	10.1
110	5.3	6.6	8.1	10.1	12.3
125	6.0	7.4	9.2	11.4	14.0
140	6.7	8.3	10.3	12.7	15.7
160	7.7	9.5	11.8	14.6	17.9
180	8.6	10.7	13.3	16.4	20.1
200	9.6	11.9	14.7	18.2	22.4
225	10.8	13.4	16.6	20.5	25.2
250	11.9	14.8	18.4	22.7	27.9
280	13.4	16.6	20.6	25.4	31.3
315	15.0	18.7	23.2	28.6	35.2
355	16.9	21.1	26.1	32.2	39.7
400	19.1	23.7	29.4	36.3	44.7
450	21.5	26.7	33.1	40.9	50.3
500	23.9	29.5	36.8	45.4	55.8
560	26.7	33.2	41.2	50.8	-
630	30.0	37.3	46.3	57.2	-
710	33.9	42.1	52.2	-	-
800	38.1	47.4	58.8	-	-
900	42.9	53.5	-	-	-
1000	47.7	59.3	-	-	-

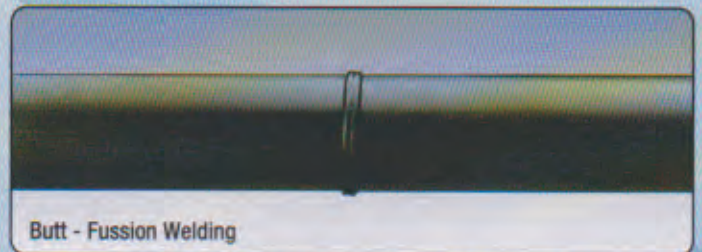
## Specification of Pipes Dimension SNI 06-4829-2005, ISO 4427

Nominal Outside Diameter $d_n$	Pipe Series <sup>1)</sup> (PE 100)				
	S-12.5	S-10	S-8	S-6.3	S-5
	Standard Dimension Ratio				
	SDR 26	SDR 21	SDR 17	SDR 13.6	SDR 11
	Nominal Pressure PN <sup>2)</sup> for $C_5 = 8$ MPa				
PN 6.3	PN 8	PN 10	PN 12.5	PN 16	
Nominal Wall Thickness, $e^3)$ mm					
20	-	-	(1.8)	(1.9)	(2.0)
25	-	-	(2.0)	(2.2)	2.3
32	-	-	(2.2)	2.4	2.9
40	-	-	(2.4)	3.0	3.7
50	-	-	3.0	3.7	4.6
63	-	3.0	3.8	4.7	5.8
75	-	3.6	4.5	5.5	6.8
90	3.5	4.3	5.4	6.6	8.2
110	4.3	5.3	6.6	8.1	10.1
125	4.8	6.0	7.4	9.2	11.4
140	5.4	6.7	8.3	10.3	12.7
160	6.2	7.7	9.5	11.8	14.6
180	6.9	8.6	10.7	13.3	16.4
200	7.7	9.6	11.9	14.7	18.2
225	8.6	10.8	13.4	16.6	20.5
250	9.6	11.9	14.8	18.4	22.7
280	10.7	13.4	16.6	20.6	25.4
315	12.1	15.0	18.7	23.2	28.6
355	13.6	16.9	21.1	26.1	32.2
400	15.3	19.1	23.7	29.4	36.3
450	17.2	21.5	26.7	33.1	40.9
500	19.1	23.9	29.5	36.8	45.4
560	21.4	26.7	33.2	41.2	50.8
630	24.1	30.0	37.3	46.3	57.2
710	27.2	33.9	42.1	52.2	-
800	30.8	38.1	47.4	58.8	-
900	34.4	42.9	53.5	-	-
1000	38.2	47.7	59.3	-	-
1200	45.9	-	-	-	-

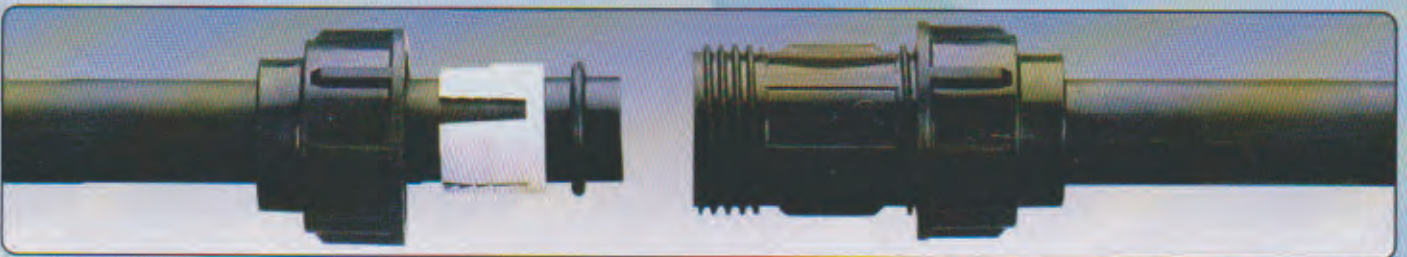
## Fabricated Fitting



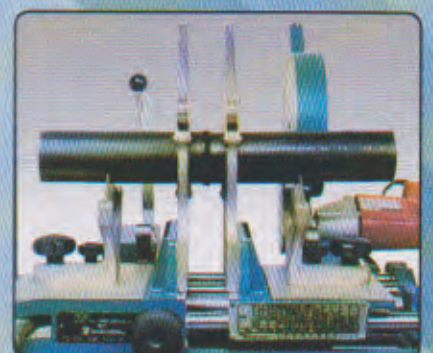
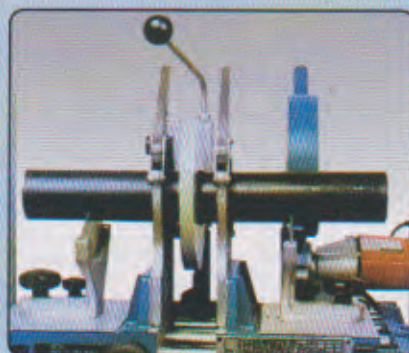
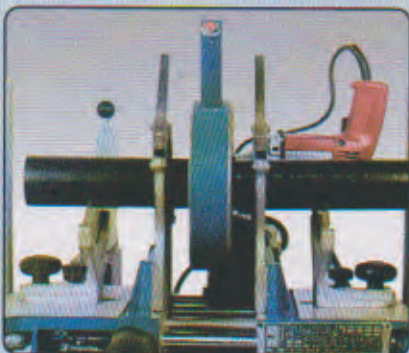
## Joining Method



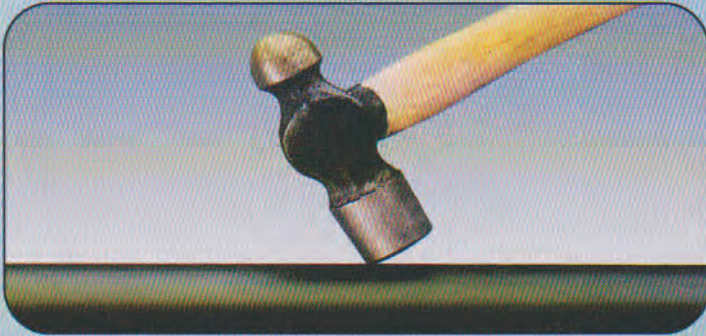
## Compression Fittings Assembling



## Butt - Fusion Welding



# Features and Application



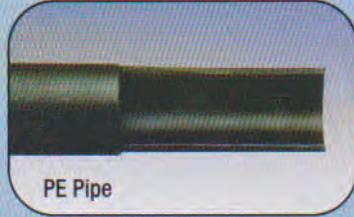
High Impact



Flexible Long & Continuous



Gas Applications



PE Pipe

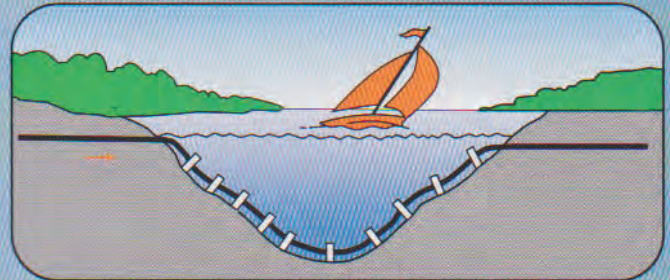


Steel Pipe

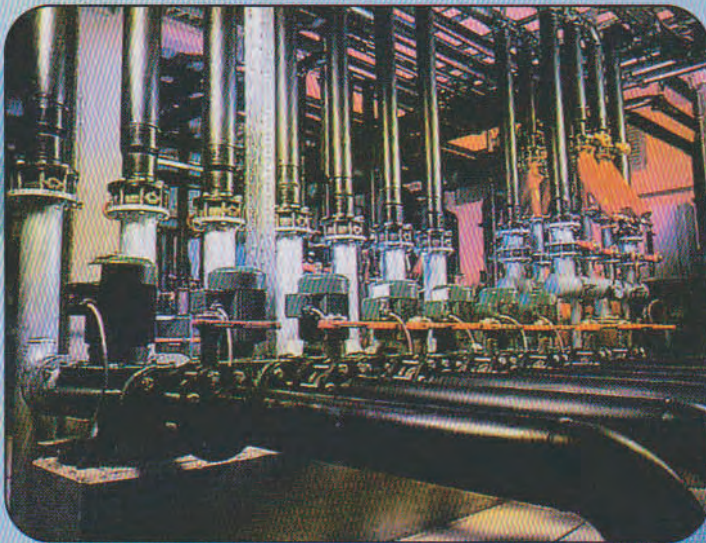
Corrosion - Free



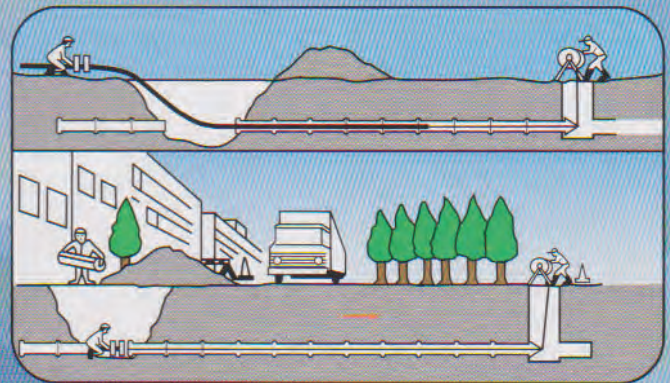
Light - Weight



Submarine - Pipe



Chemical Resistance



Re - Lining



## PT. GOLDEN PIPING INDONESIA

Jl. Pahlawan Seribu, Ruko Golden Boulevard Blok E-30 BSD City

Kota Tangerang Selatan 15320 Banten Indonesia

Telp.: +62 21 5315 6333, 5315 9333 Fax.: +62 21 5316 7333

Email : info@depopipa.com